

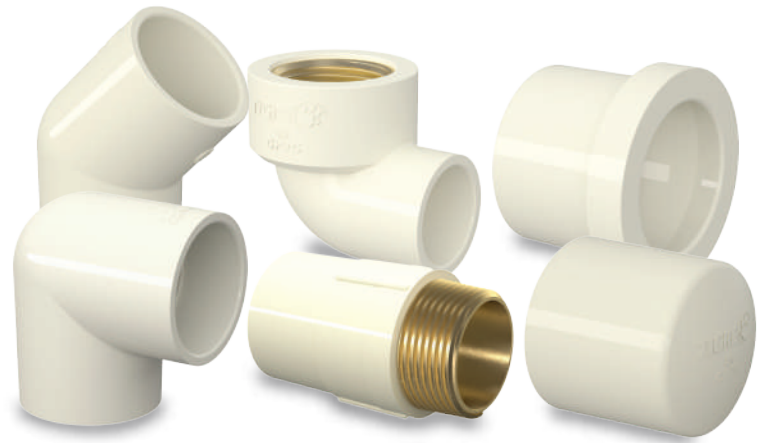
# CPVC CTS FITTINGS

## Specifications

### CPVC CTS FITTINGS

Building and industrial facilities of hot and cold water. The line can also be used to conduct other liquids.

- CPVC CTS fittings are manufactured using Chlorinated Polyvinyl Chloride, and meet the requirements of Class 23447 as referenced in ASTM D-1784.
- CPVC CTS fittings conform to the standard specification for solvent cements for Chlorinated Polyvinyl Chloride (CPVC) plastic pipe and fittings.



#### Reference Standards

All sizes from ½" to 2"



#### CPVC CTS Information

DO NOT USE CPVC TO CONDUCT STEAM;

WORKING MAXIMUM TEMPERATURE IS 176°F;

MODIFICATION OF FITTINGS VOID THE WARRANTY;

SPECS SUBJECT TO CHANGE WITHOUT NOTICE.