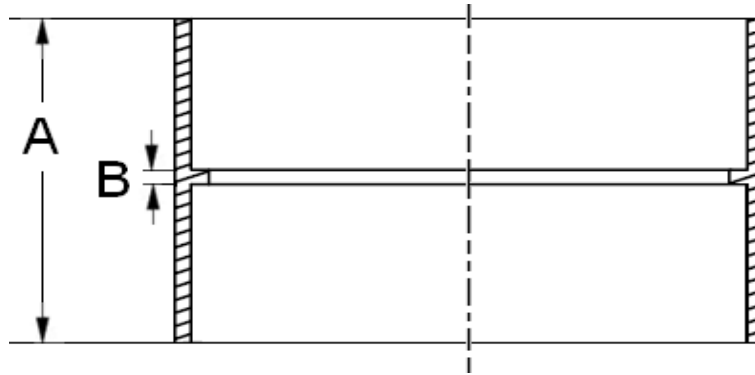


Laying Length

SDR 35 SW

STOP COUPLING



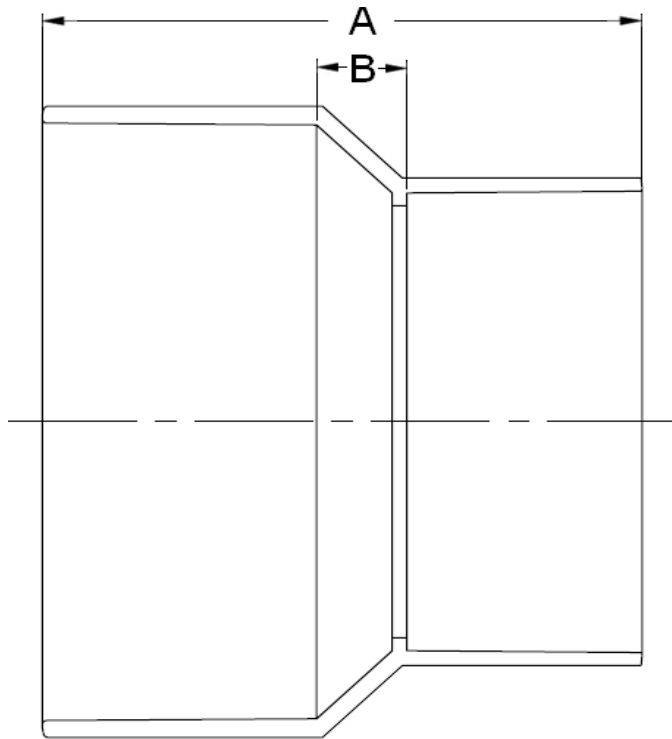
INJECTION MOLDED FITTING

Part #	Description	A	B
36-665	STOP COUPLING HXH 4"	3.69	0.19
36-666	STOP COUPLING HXH 6"	6.23	0.20
36-667	STOP COUPLING HXH 8"	8.30	0.27

Laying Length

SDR 35 SW

INCREASER COUPLING HxH CONCENTRIC



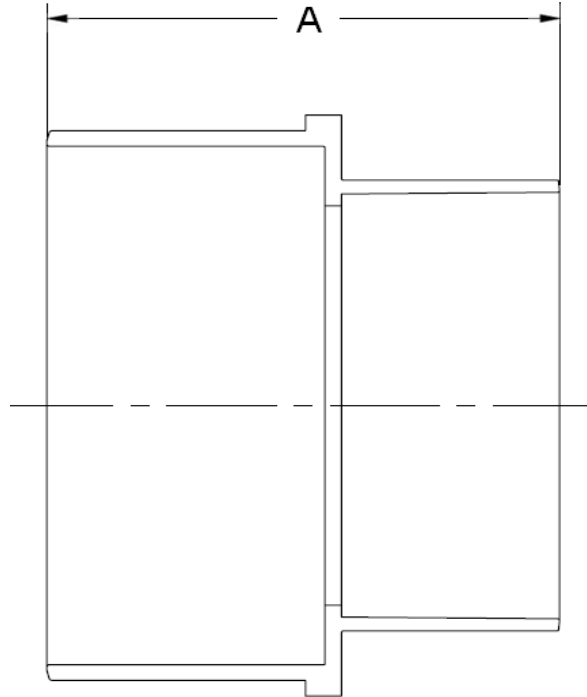
INJECTION MOLDED FITTING

Part #	Description	A	B
36-1076	INCREASER COUPLING HxH CONCENTRIC 3" x 4"	3.83	0.58
36-700	INCREASER COUPLING HxH CONCENTRIC 4" x 6"	5.90	1.15
36-701	INCREASER COUPLING HxH CONCENTRIC 4" x 8"	7.96	2.21
36-702	INCREASER COUPLING HxH CONCENTRIC 6" x 8"	8.24	1.24

Laying Length

SDR 35 SW

REDUCER BUSHING CONCENTRIC



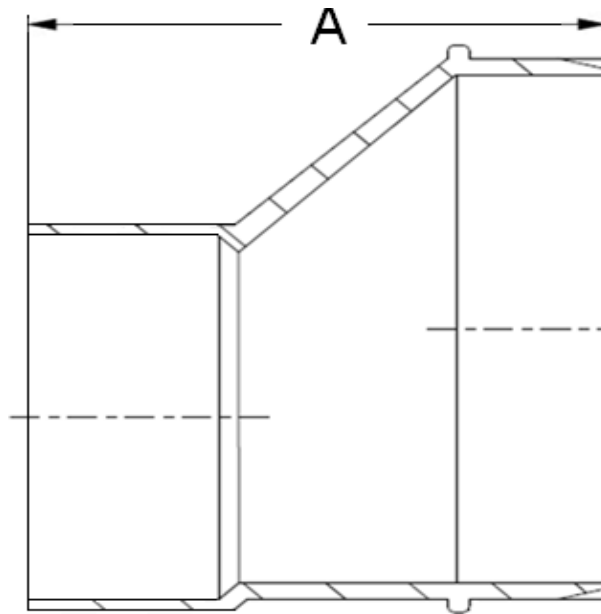
INJECTION MOLDED FITTING

Part #	Description	A
36-1077	REDUCER BUSHING CONCENTRIC S x H 4" x 3"	3.54
36-706	REDUCER BUSHING CONCENTRIC S x H 6" x 4"	4.96
36-707	REDUCER BUSHING CONCENTRIC S x H 8" x 4"	8.08
36-708	REDUCER BUSHING CONCENTRIC S x H 8" x 6"	8.30

Laying Length

SDR 35 SW

REDUCER BUSHING ECCENTRIC



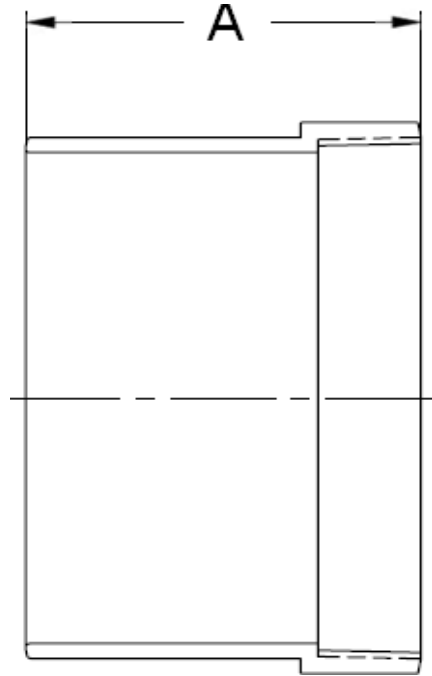
INJECTION MOLDED FITTING

Part #	Description	A
36-812	REDUCER BUSHING ECCENTRIC SXH 6" X 4"	7.15
36-813	REDUCER BUSHING ECCENTRIC SXH 8" X 4"	9.43
36-814	REDUCER BUSHING ECCENTRIC SXH 8" X 6"	10.43

Laying Length

SDR 35 SW

FITTING CLEANOUT



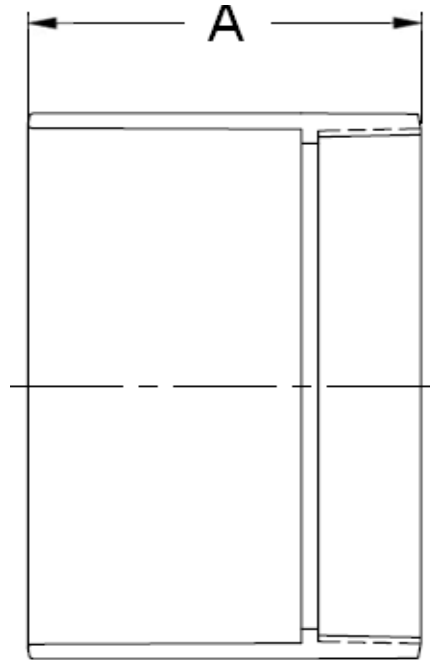
INJECTION MOLDED FITTING

Part #	Description	A
36-641	FITTING CLEANOUT SPIGOT BY FIPT 4"	4.01
36-642	FITTING CLEANOUT SPIGOT BY FIPT 6"	5.17
36-643	FITTING CLEANOUT SPIGOT BY FIPT 8"	5.75

Laying Length

SDR 35 SW

FEMALE ADAPTER



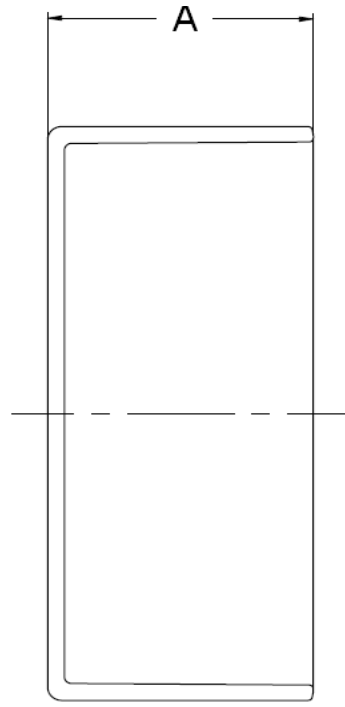
INJECTION MOLDED FITTING

Part #	Description	A
36-644	FEMALE ADAPTER SEWER HUB BY FIPT 4"	3.50
36-645	FEMALE ADAPTER SEWER HUB BY FIPT 6"	5.15
36-333	FEMALE ADAPTER SEWER HUB BY FIPT 8"	5.75

Laying Length

SDR 35 SW

CAP



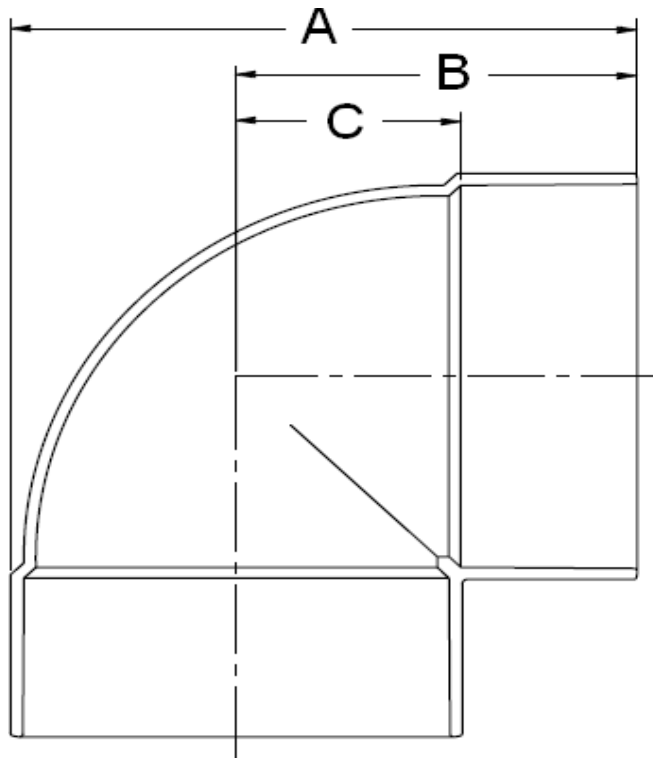
INJECTION MOLDED FITTING

Part #	Description	A
36-686	CAP 4"	1.91
36-687	CAP 6"	3.95
36-688	CAP 8"	5.33

Laying Length

SDR 35 SW

1/4 BEND HxH



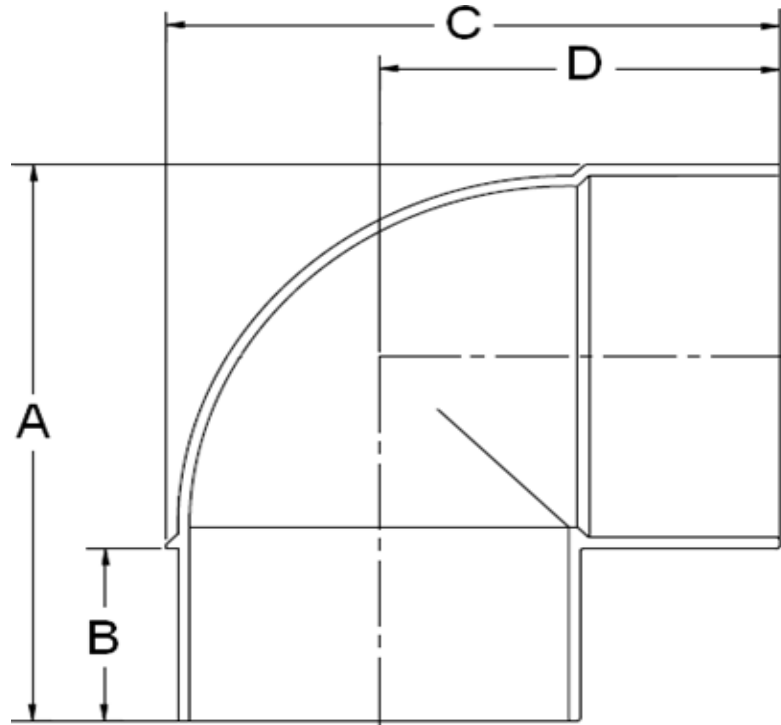
INJECTION MOLDED FITTING

Part #	Description	A	B	C
36-683	1/4 BEND HXH 4"	6.43	5.05	3.19
36-684	1/4 BEND HXH 6"	9.65	7.18	4.09
36-685	1/4 BEND HXH 8"	12.92	10.60	6.45

Laying Length

SDR 35 SW

1/4 BEND HxS



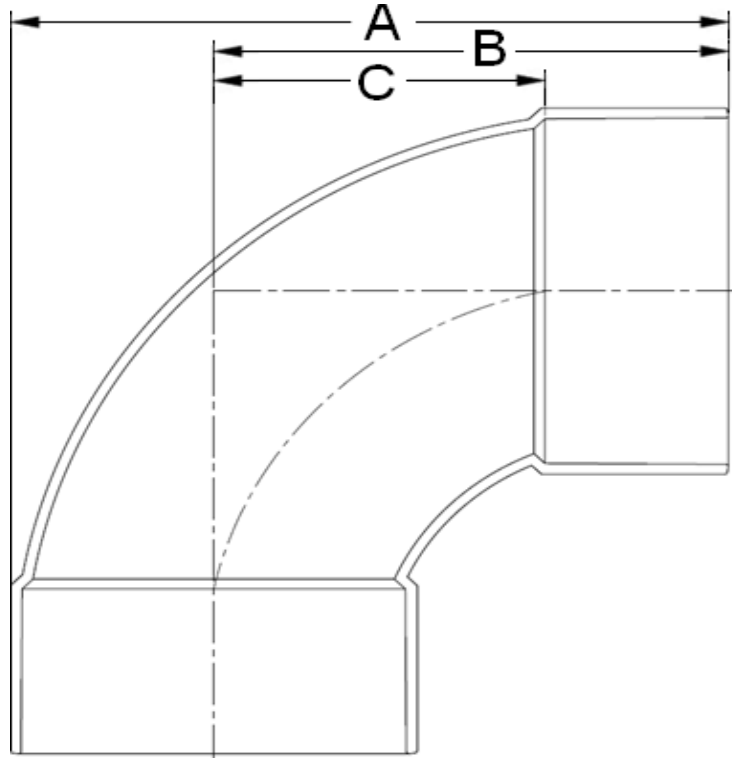
INJECTION MOLDED FITTING

Part #	Description	A	B	C	D
36-742	1/4 BEND HXS 6"	9.80	3.46	9.40	5.20
36-743	1/4 BEND HXS 8"	13.10	5.00	12.18	8.65

Laying Length

SDR 35 SW

1/4 BEND LONG TURN HXH



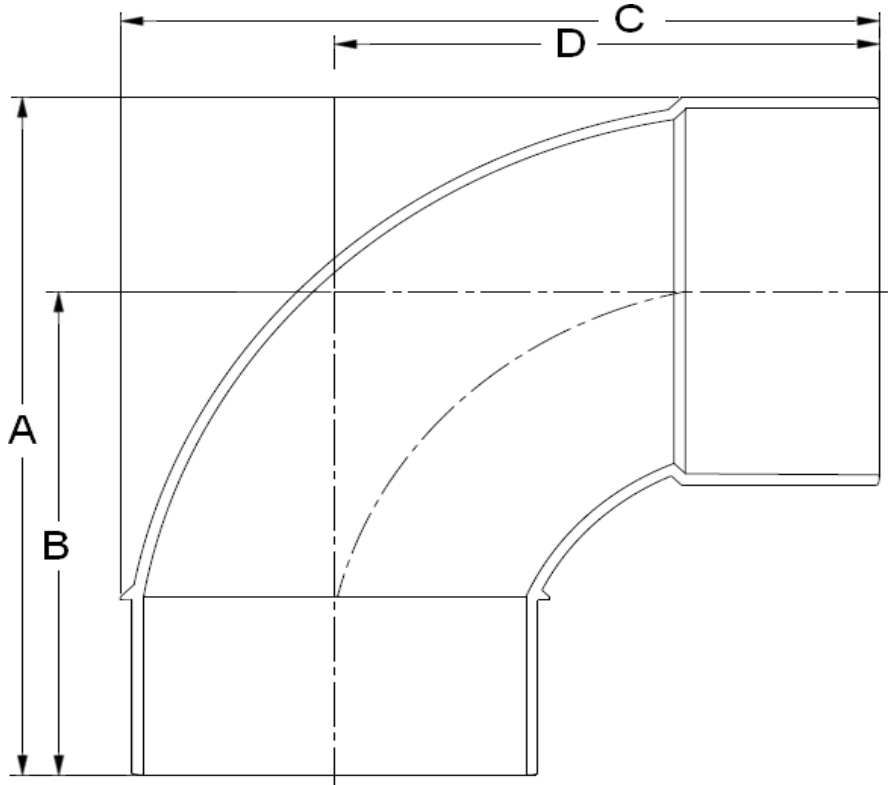
INJECTION MOLDED FITTING

Part #	Description	A	B	C
36-677	1/4 BEND LONG TURN HXH 4"	7.67	5.50	3.66
36-678	1/4 BEND LONG TURN HXH 6"	11.75	8.42	5.42
36-679	1/4 BEND LONG TURN HXH 8"	15.33	10.88	6.88

Laying Length

SDR 35 SW

1/4 BEND LONG TURN HXS



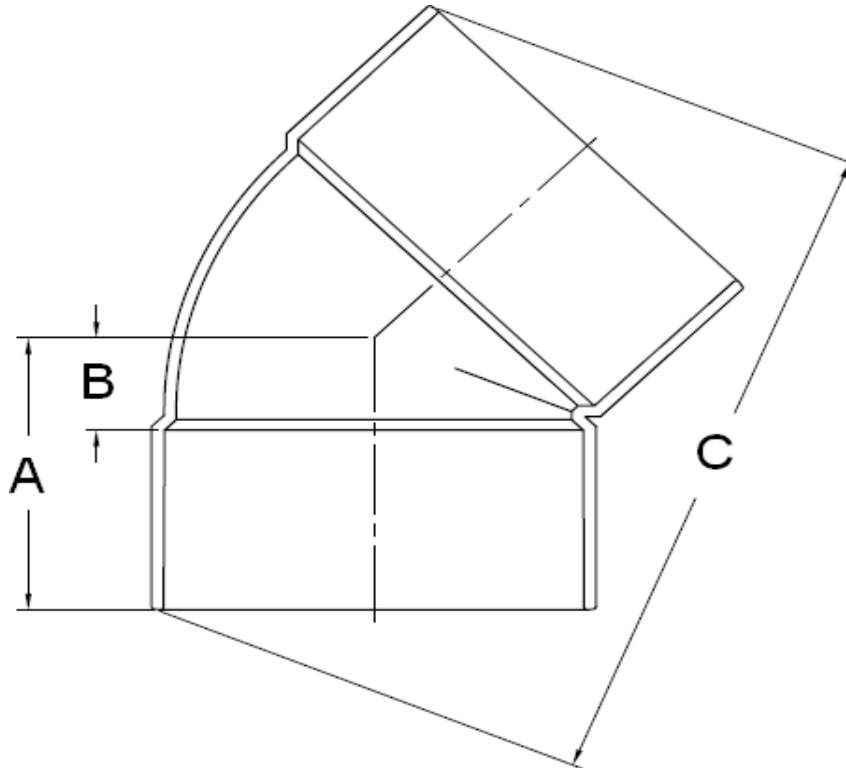
INJECTION MOLDED FITTING

Part #	Description	A	B	C	D
36-680	1/4 BEND LONG TURN HXS 4"	7.69	5.44	7.74	5.64
36-681	1/4 BEND LONG TURN HXS 6"	11.65	8.32	11.74	8.42
36-682	1/4 BEND LONG TURN HXS 8"	15.20	10.75	15.32	10.88

Laying Length

SDR 35 SW

1/8 BEND HXH



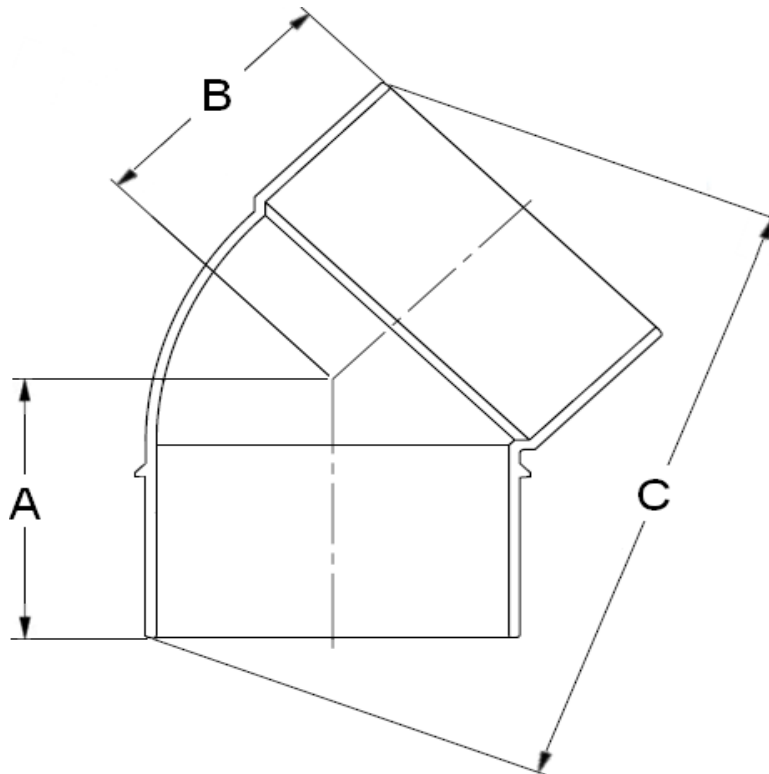
INJECTION MOLDED FITTING

Part #	Description	A	B	C
36-671	1/8 BEND HXH 4"	2.75	0.89	6.80
36-672	1/8 BEND HXH 6"	5.09	1.98	10.52
36-673	1/8 BEND HXH 8"	6.05	2.05	14.52

Laying Length

SDR 35 SW

1/8 BEND HXS



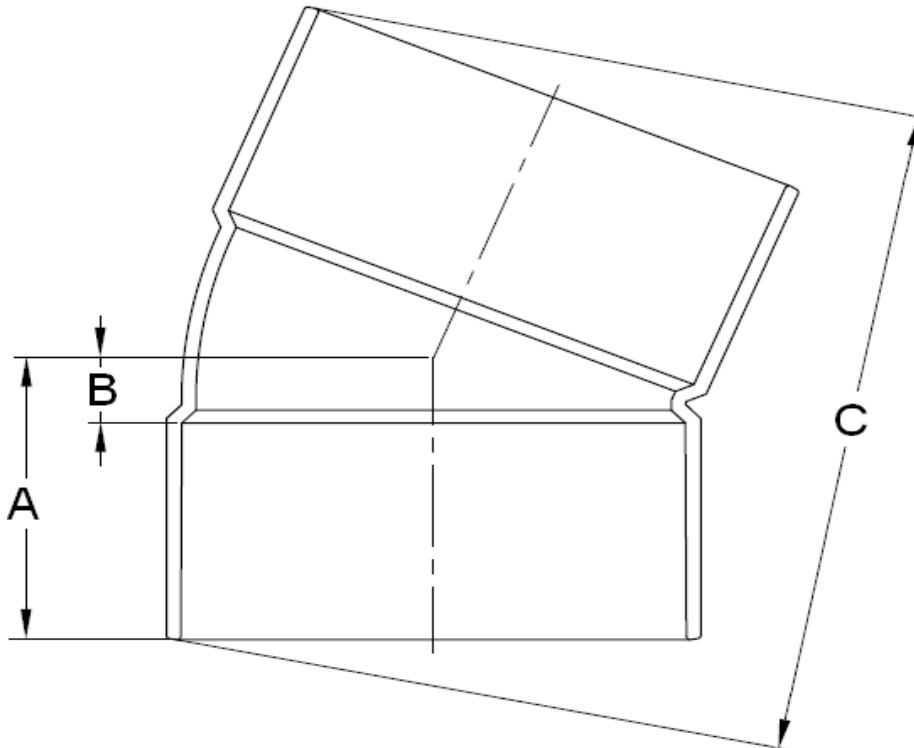
INJECTION MOLDED FITTING

Part #	Description	A	B	C
36-674	1/8 BEND HXS 4"	3.30	2.75	6.41
36-675	1/8 BEND HXS 6"	7.53	5.00	12.00
36-676	1/8 BEND HXS 8"	6.45	6.05	14.80

Laying Length

SDR 35 SW

1/16 BEND HXH



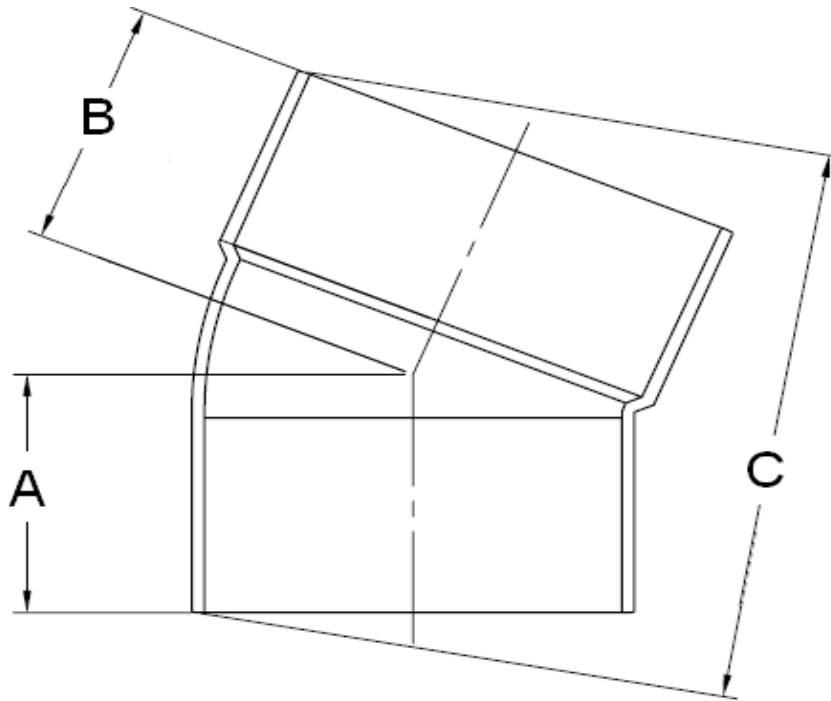
INJECTION MOLDED FITTING

Part #	Description	A	B	C
36-668	1/16 BEND HXH 4"	2.55	0.75	5.59
36-669	1/16 BEND HXH 6"	4.12	1.00	9.03
36-670	1/16 BEND HXH 8"	5.20	1.20	11.88

Laying Length

SDR 35 SW

1/16 BEND HXS



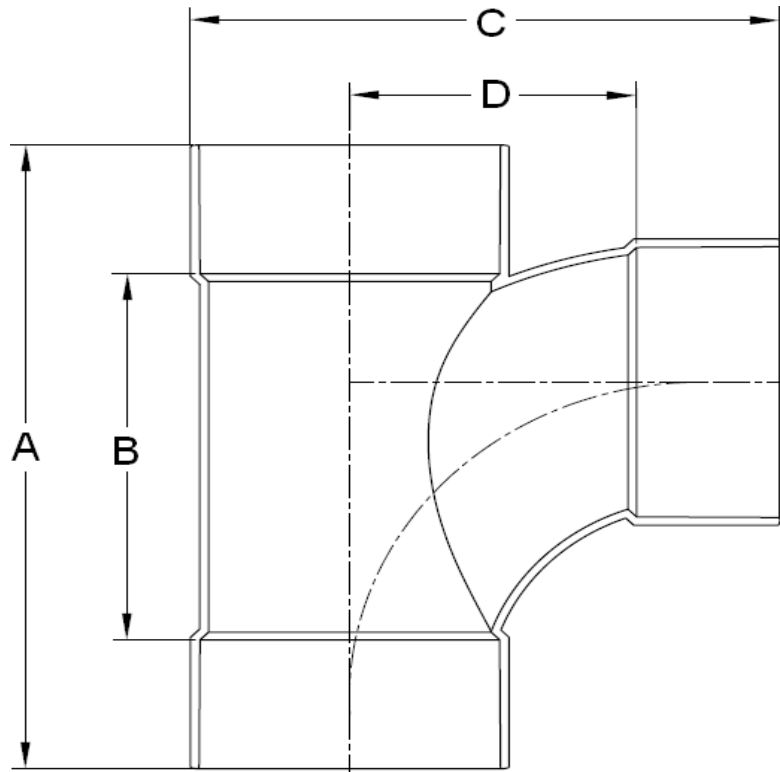
INJECTION MOLDED FITTING

Part #	Description	A	B	C
36-1043	1/16 BEND HXS 4"	1.91	1.88	5.46
36-1044	1/16 BEND HXS 6"	4.00	3.06	9.04
36-1075	1/16 BEND HXS 8"	5.60	5.20	12.23

Laying Length

SDR 35 SW

TEE WYE HXHXH



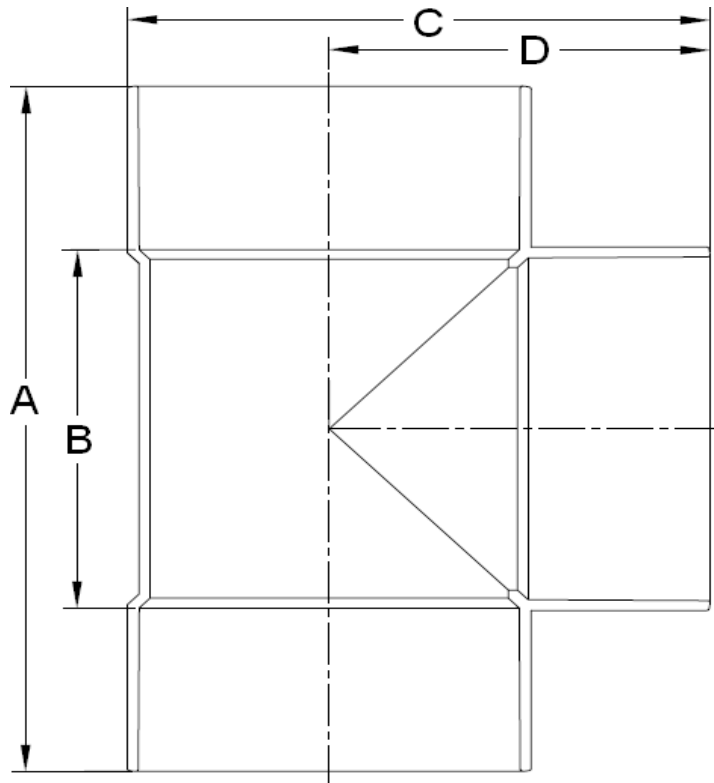
INJECTION MOLDED FITTING

Part #	Description	A	B	C	D
36-721	TEE WYE HXHXH 4"	9.02	5.42	7.77	5.87
36-722	TEE WYE HXHXH 6" X 4"	12.51	6.51	9.70	4.62
36-723	TEE WYE HXHXH 6"	14.52	8.52	12.33	6.00
36-724	TEE WYE HXHXH 8" X 4"	14.65	6.65	11.92	5.72
36-725	TEE WYE HXHXH 8" X 6"	16.90	8.90	13.87	6.42
36-726	TEE WYE HXHXH 8"	19.16	11.16	15.35	6.90

Laying Length

SDR 35 SW

TEE HXHXH



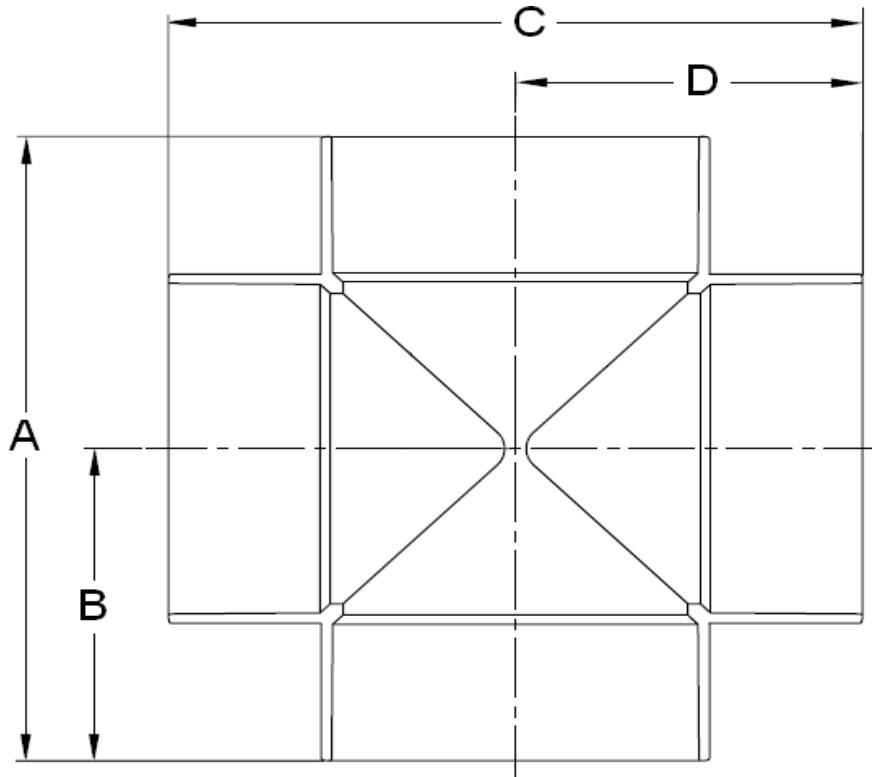
INJECTION MOLDED FITTING

Part #	Description	A	B	C	D
36-1083	TEE HXHXH 4"	7.96	4.33	6.13	4.21
36-1084	TEE HXHXH 6" x 4"	10.63	4.49	8.24	5.90
36-1085	TEE HXHXH 6"	12.79	6.55	9.30	6.37
36-1086	TEE HXHXH 8" x 4"	12.79	4.64	10.15	6.28
36-1087	TEE HXHXH 8" x 6"	15.55	7.40	12.13	7.63
36-1088	TEE HXHXH 8"	17.18	8.96	12.40	8.64

Laying Length

SDR 35 SW

CROSS



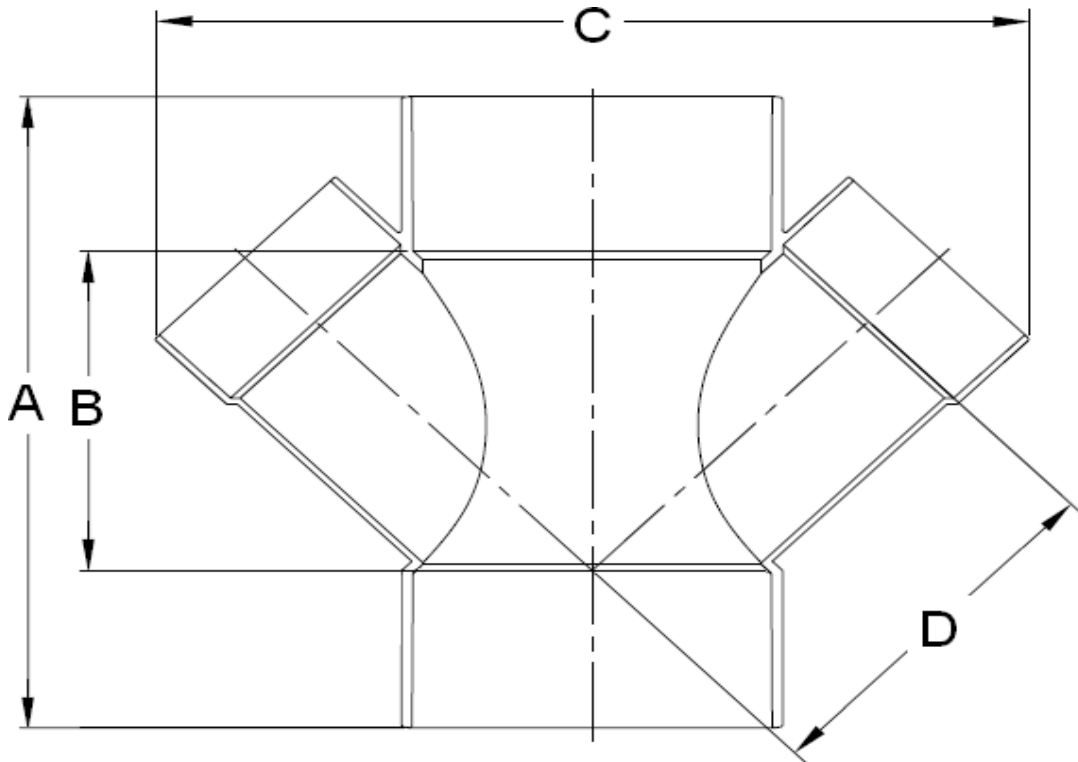
INJECTION MOLDED FITTING

Part #	Description	A	B	C	D
36-715	CROSS HXHXHXH 4"	7.93	3.89	7.95	4.00

Laying Length

SDR 35 SW

DOUBLE WYE



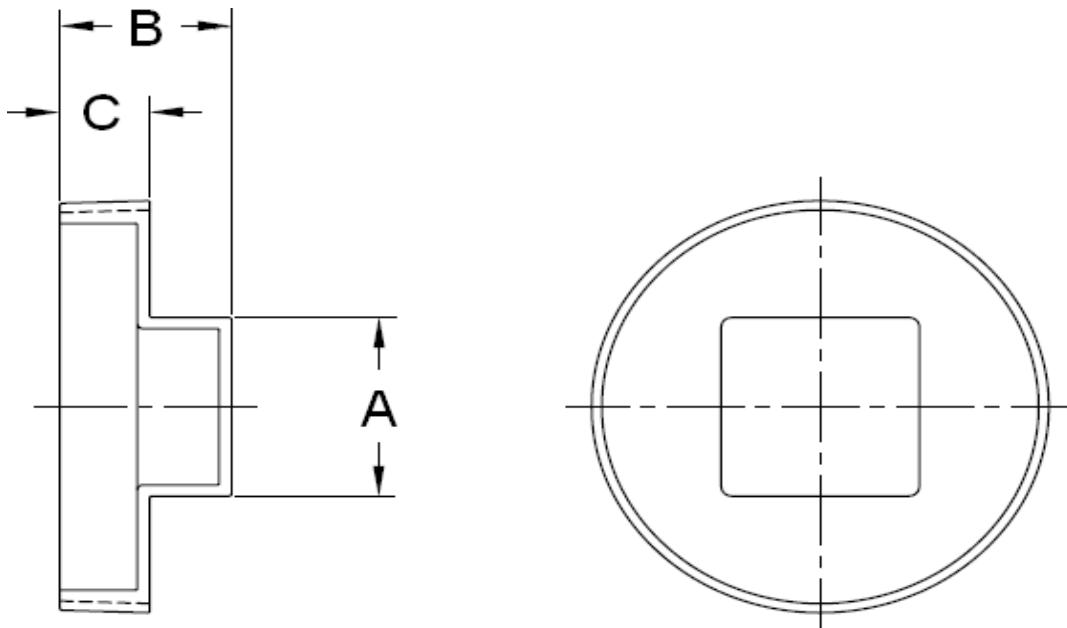
INJECTION MOLDED FITTING

Part #	Description	A	B	C	D
36-736	DOUBLE WYE 6" x 4" HXHXHXH	12.27	6.21	15.28	6.84
36-737	DOUBLE WYE 6" HXHXHXH	15.03	7.60	20.00	7.85

Laying Length

SDR 35 SW

CLEAN OUT THREADED RAISED PLUG



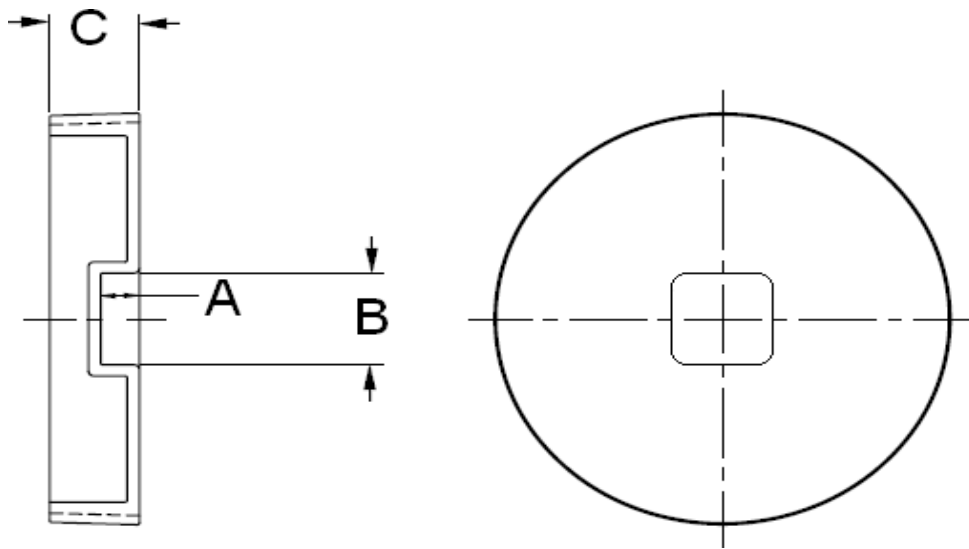
INJECTION MOLDED FITTING

Part #	Description	A	B	C
36-695	CLEAN OUT THREADED RAISED PLUG 4"	1.94	1.68	0.88
36-696	CLEAN OUT THREADED RAISED PLUG 6"	2.11	2.20	1.07
36-697	CLEAN OUT THREADED RAISED PLUG 8"	2.00	2.20	1.54

Laying Length

SDR 35 SW

CLEAN OUT THREADED PLUG RECESSED



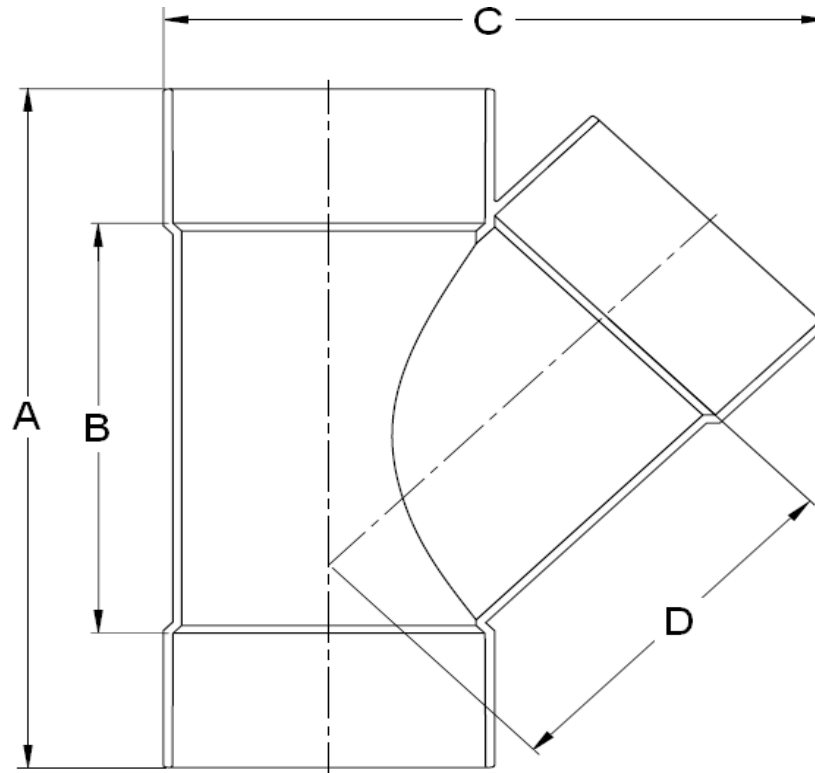
INJECTION MOLDED FITTING

Part #	Description	A	B	C
36-698	CLEAN OUT THREADED PLUG RECESSED 4"	0.50	2.02	0.97
36-699	CLEAN OUT THREADED PLUG RECESSED 6"	0.55	2.04	1.04

Laying Length

SDR 35 SW

WYE HXHXH



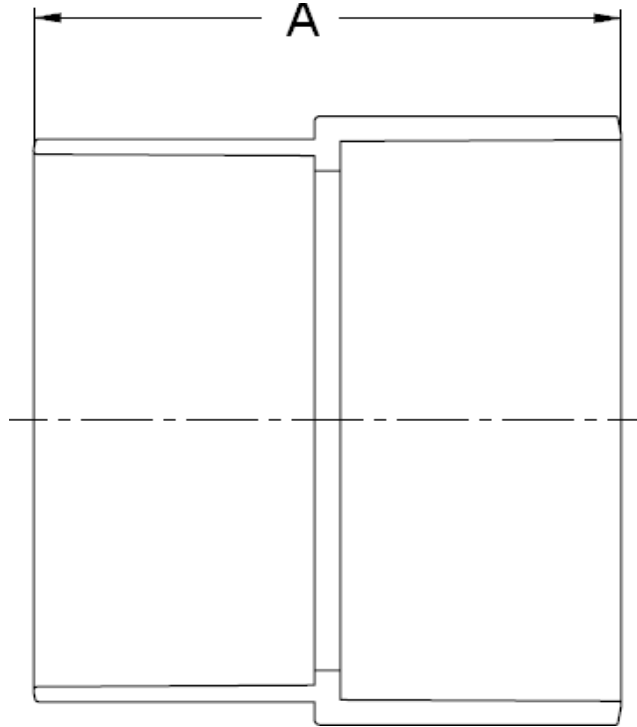
INJECTION MOLDED FITTING

Part #	Description	A	B	C	D
36-730	WYE HXHXH 4"	9.71	6.04	7.50	7.36
36-731	WYE HXHXH 6" x 4"	12.95	6.79	9.82	7.55
36-732	WYE HXHXH 6"	15.83	9.82	12.40	9.92
36-733	WYE HXHXH 8" x 4"	17.00	8.78	13.86	9.57
36-734	WYE HXHXH 8" x 6"	17.68	9.52	15.00	11.50
36-735	WYE HXHXH 8"	20.21	12.21	17.82	10.50

Laying Length

SDR 35 SW

DWV COUPLING SEWER HUB BY DWV HUB



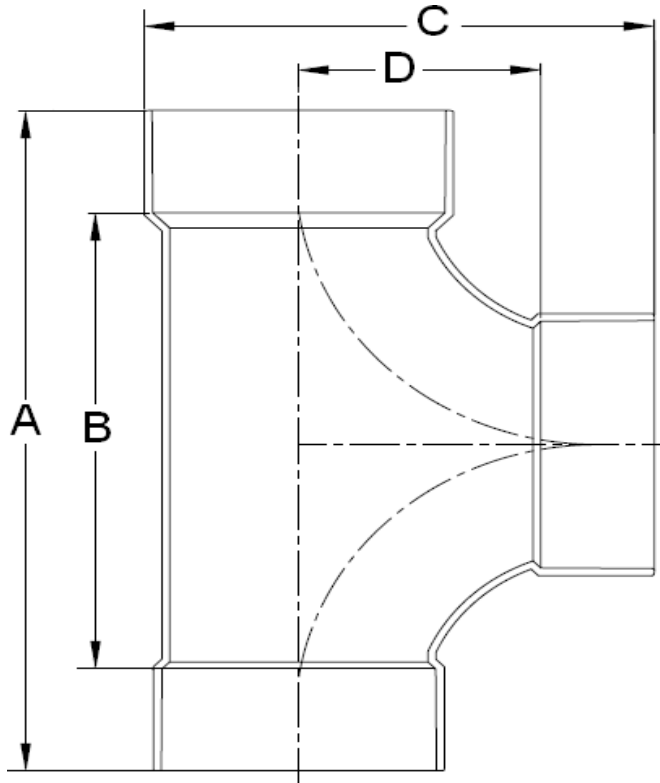
INJECTION MOLDED FITTING

Part #	Description	A
36-659	DWV COUPLING SEWER HUB BY DWV HUB 4" x 3"	4.01
36-660	DWV COUPLING SEWER HUB BY DWV HUB 4"	3.86
36-662	DWV COUPLING SEWER HUB X DWV HUB 6"	6.28

Laying Length

SDR 35 SW

TWO WAY CLEAN OUT TEE HXHXH



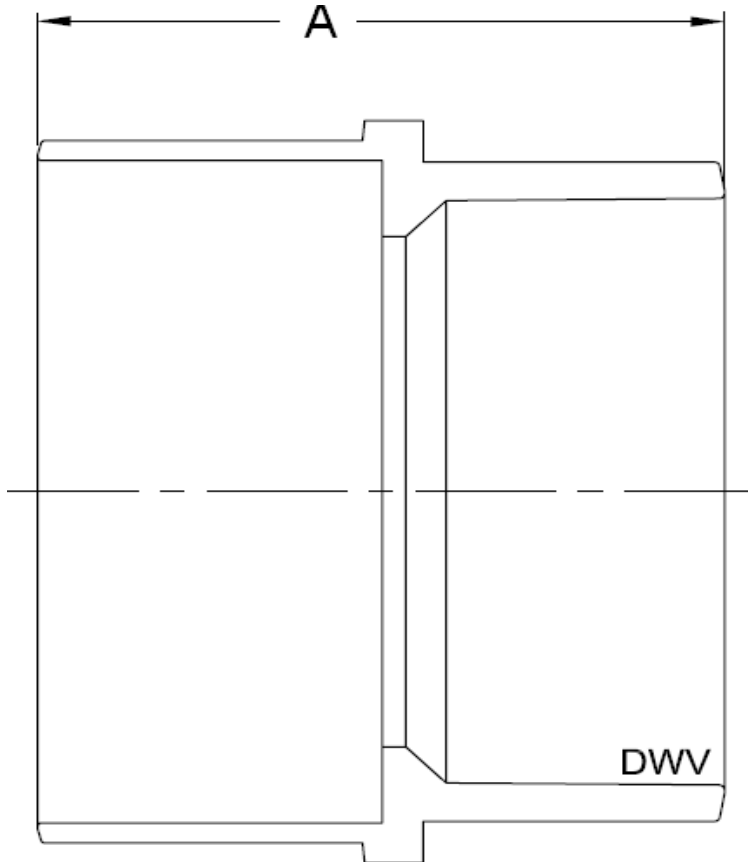
INJECTION MOLDED FITTING

Part #	Description	A	B	C	D
36-727	TWO WAY CLEAN OUT TEE HXHXH 4"	11.23	7.59	7.84	3.88
36-728	TWO WAY CLEAN OUT TEE HX DWV X H 4"	11.29	7.79	7.85	3.72
36-1089	TWO WAY CLEAN OUT TEE HX H X FIPT 4"	8.31	6.58	5.80	

Laying Length

SDR 35 SW

DWV BUSHING SEWER SPIGOT BY DWV HUB



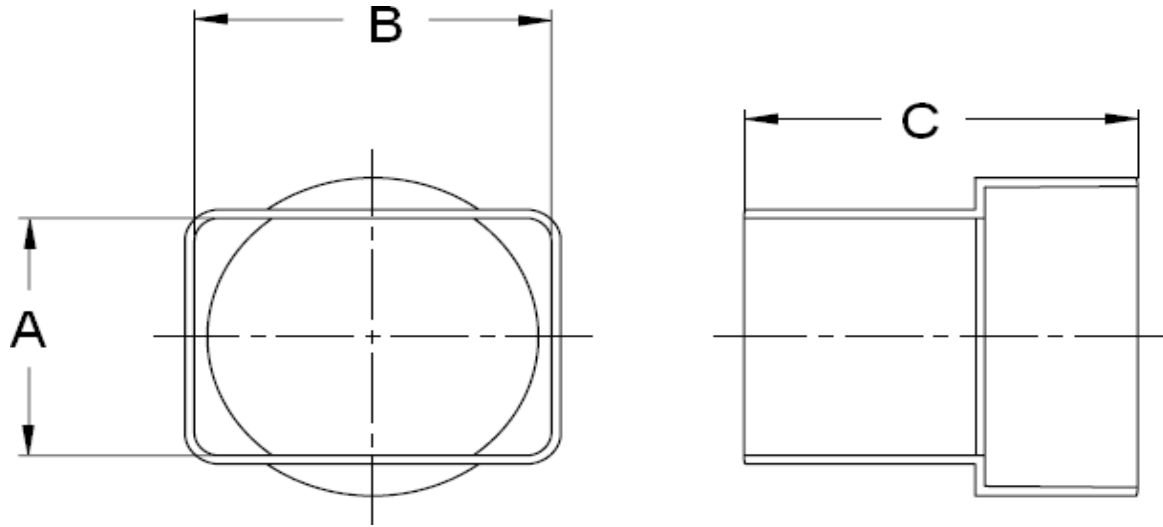
INJECTION MOLDED FITTING

Part #	Description	A
36-656	DWV BUSHING SEWER SPIGOT BY DWV HUB 4"	4.56
36-658	DWV BUSHING SEWER SPIGOT BY DWV HUB 6"	6.69
36-655	DWV BUSHING SEWER SPIGOT X DWV HUB 4" X 3"	3.70
36-657	DWV BUSHING SEWER SPIGOT X DWV HUB 6" X 4"	6.01

Laying Length

SDR 35 SW

ADAPTER DOWNSPOUT SEWER HUB



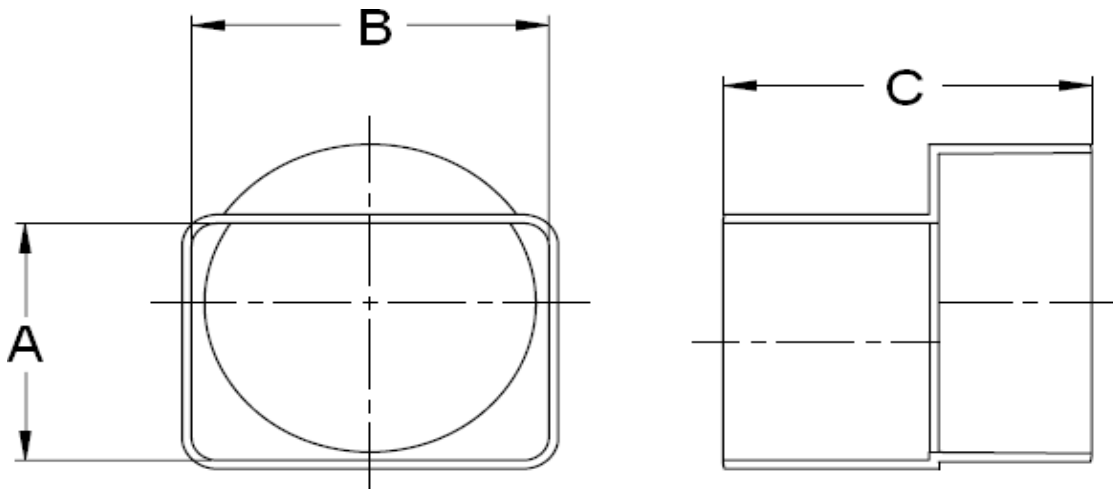
INJECTION MOLDED FITTING

Part #	Description	A	B	C
36-651	ADAPTER DOWNSPOUT SEWER HUB 2" X 3" X 3"	2.58	3.50	3.86
36-652	ADAPTER DOWNSPOUT SEWER HUB 2" X 3" X 4"	2.58	3.50	4.11
36-653	ADAPTER DOWNSPOUT SEWER HUB 3" X 4" X 3"	3.50	4.48	3.88
36-654	ADAPTER DOWNSPOUT SEWER HUB 3" X 4" X 4"	3.50	4.48	4.13

Laying Length

SDR 35 SW

ADAPTER DOWNSPOUT FLUSH MOUNT X SEWER HUB



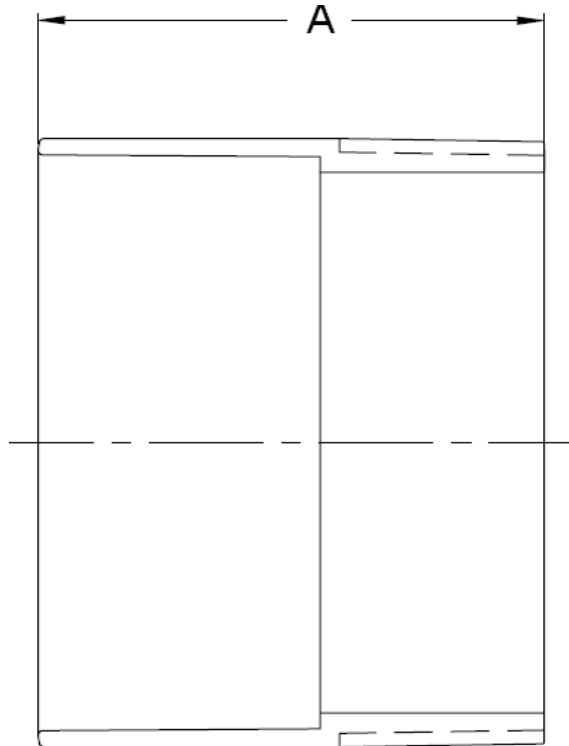
INJECTION MOLDED FITTING

Part #	Description	A	B	C
36-647	ADAPTER DOWNSPOUT FLUSH MOUNT X SEWER HUB 2" X 3" X 3"	2.58	3.50	3.61
36-648	ADAPTER DOWNSPOUT FLUSH MOUNT X SEWER HUB 2" X 3" X 4"	2.58	3.50	3.89
36-649	ADAPTER DOWNSPOUT FLUSH MOUNT X SEWER HUB 3" X 4" X 4"	3.50	4.48	3.89
36-650	ADAPTER DOWNSPOUT FLUSH MOUNT X SEWER HUB 4" X 6" X 6"	3.69	5.69	5.00

Laying Length

SDR 35 SW

MALE ADAPTER HUB X MIPT



INJECTION MOLDED FITTING

Part #	Description	A
36-1062	MALE ADAPTER HUB X MIPT 4"	3.35
36-1063	MALE ADAPTER HUB X MIPT 6"	5.05